



සිරිධම්ම විද්‍යාලය
SIRIDHAMMA COLLEGE

GRADE 10 - FIRST TERM EVALUATION, ASSIGNMENT 1, 2020

WESTERN MUSIC

Question no 01-05 are based on the pictures below



1) Which one of these is used to tune other instruments?

- a) 1 b) 3 c) 5 d) 6

2) Which one is the single reed instrument?

- a) 2 b) 8 c) 4 d) 2

3) Which 2 instruments are reeds less?

- a) 1 b) 2 c) 3 d) 4

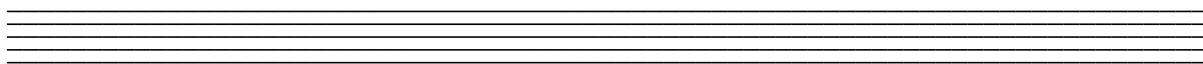
4) Which one of these non-transposing brass instruments ?

- a) 3 b) 5 c) 2 d) 8

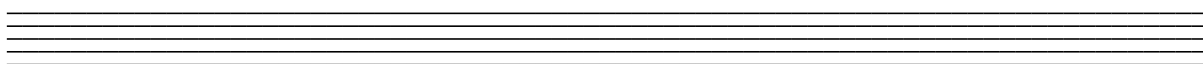
5) Which instrument plays using Bass clef?

a)4 b)7 c)8 4)6

02) The major scale ascending and descending which has a key signature of 5 flats .Use the Alto clef and write in quavers.



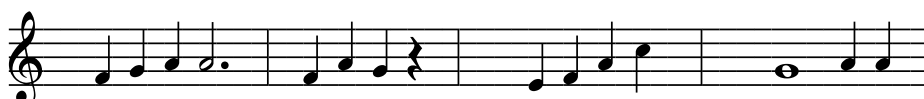
b) Using the G clef, G sharp Harmonic minor scale ascending with key signature, write in crotchets.



03) Rewrite the following with the notes correctly grouped



b)Add a correct time signatures at the beginning of each of these bars



04).Name the given intervals

